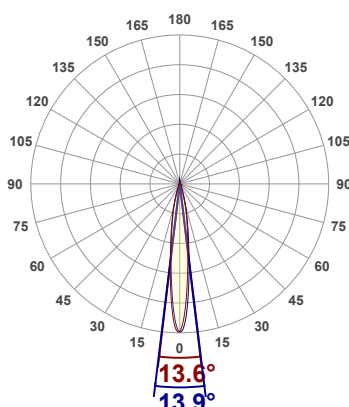
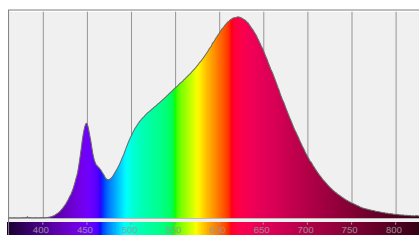
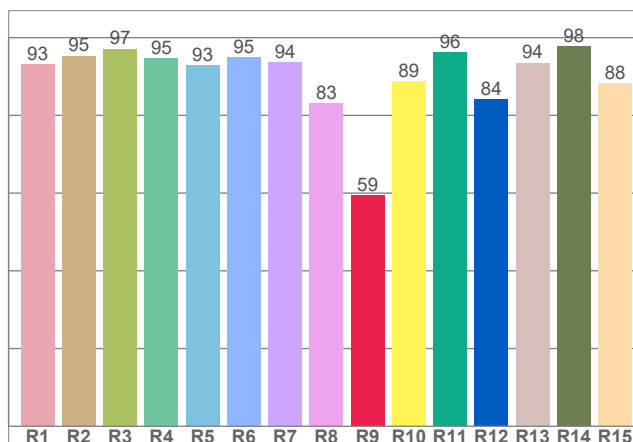
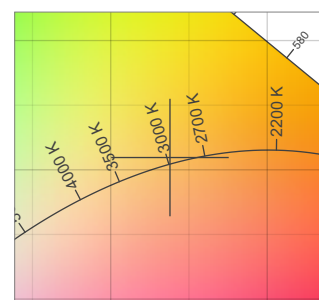


Light efficiency:
98 Lumen/Watt
Light quality:
CRI: 93.1
Color temperature:
3032 K
Output: 556 Lumen

Product name:
TOOL GRAZER 12 TOP BEND-3000K-18Wm-333mm-12
Date and time:
17/06/2026 10:06:19
Power consumption:

Power	Power factor
5.7 W	1.0
Voltage (Vcc)	Current
24.0 V	0.236 A

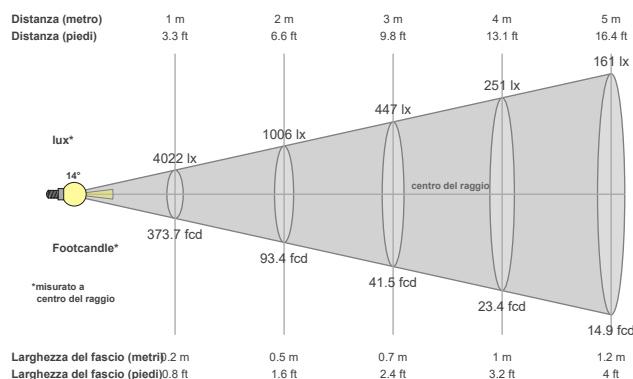
TM-30 details


Rf 93.2
Fidelity index Rf

Rg 99.3
Gamut index Rg

Spectral distribution

CRI R values

White color point

Color temperature	Color rendering index	Red component	Color fidelity	Color gamut	Color quality scale	Color coordinate cie 1931	Color coordinate cie 1931	Color coordinate	Color coordinate	Color deviation from black body
CCT	CRI	CRI R9	TM30 Rf	TM30 Rg	CQS	x	y	u	v	Δuv
3032 K	93.1	59.4	93.2	99.3	92.0	0.438	0.409	0.249	0.349	0.0020

Beam details



Beam angles

Beam angle 50%	Field angle 10%	Cutoff angle 2,5%
14°	35.3°	53°

Beam intensities

Peak intensity	Int. ratio in 120° cone	Int. ratio in 90° cone
4068 cd	94.6%	89.6%

Beam intensities from 1-20m

1m	2m	3m	4m	5m	6m	7m	8m	9m	10m	11m	12m	13m	14m	15m	16m	17m	18m	19m	20m
3.3ft	6.6ft	9.8ft	13.1ft	16.4ft	19.7ft	23ft	26.2ft	29.5ft	32.8ft	36.1ft	39.4ft	42.7ft	45.9ft	49.2ft	52.5ft	55.8ft	59.1ft	62.3ft	65.6ft
4022lx	1006lx	447lx	251lx	161lx	112lx	82lx	63lx	50lx	40lx	33lx	28lx	24lx	21lx	18lx	16lx	14lx	12lx	11lx	10lx
373.7fcd	93.4fcd	41.5fcd	23.4fcd	14.9fcd	10.4fcd	7.6fcd	5.8fcd	4.6fcd	3.7fcd	3.1fcd	2.6fcd	2.2fcd	1.9fcd	1.7fcd	1.5fcd	1.3fcd	1.2fcd	1fcd	0.9fcd